

Directions to McMaster and DBAC Facility- From the West

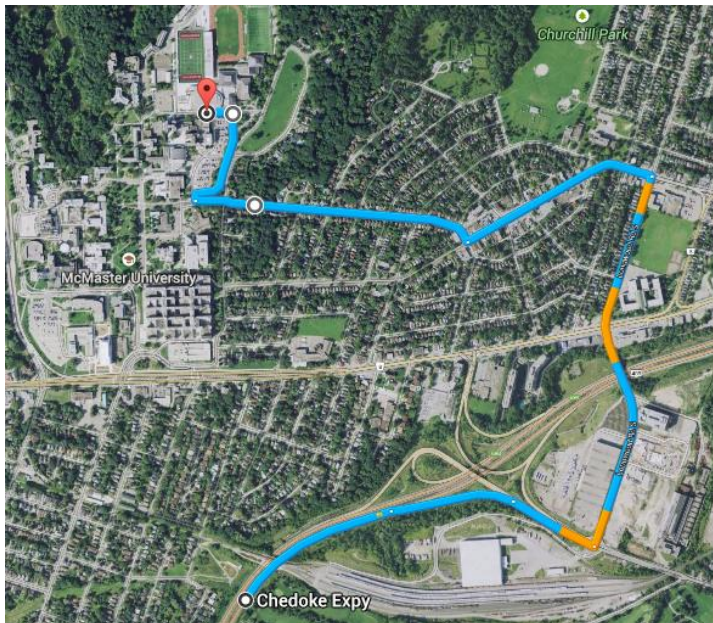
Directions to McMaster from Highway 403:

- Head east on **ON-403**
- Take exit **69** for **Aberdeen Avenue**
- Turn **left** at onto **Longwood St. S**
- At the 4th set of lights, turn **left** onto **King St. W**
- At the 2nd set of lights, turn **right** onto **Sterling St**
- Follow **Sterling St** to **McMaster Sterling Entrance** and proceed through
- See Next Page for *'Detailed On Campus Directions' including Parking and Lot Information*

Google Map Link – Directions To DBAC Facility Main Entrance:

<https://www.google.ca/maps/dir/43.2521283,-79.9150997/43.264635,-79.916437/@43.2596421,-79.9087938,15z/am=t/data=!4m13!4m12!1m8!3m3!1m2!1d-79.914756!2d43.262279!3m3!1m2!1d-79.915538!2d43.264628!1m1!4e1!3e0?hl=en>

Route from Hwy 403 to DBAC Main Entrance:



“ACHIEVING EXCELLENCE IN SPORT MEDICINE AND ORTHOPEDICS”

Directions to McMaster and DBAC Facility- From the East

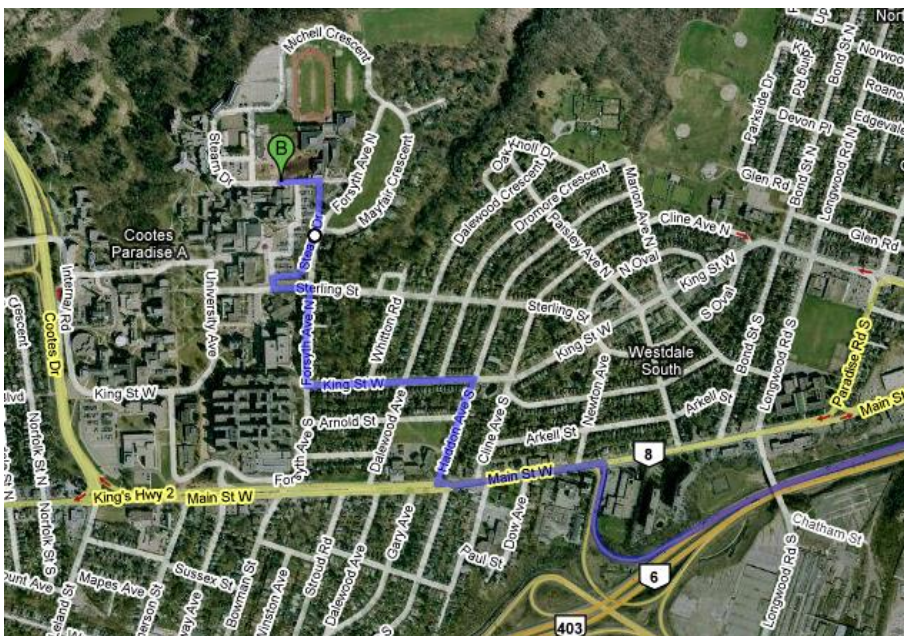
Directions to McMaster from Highway 403:

- Head west on **ON-403 W/ON-6 S**
- Take exit **69A** for **ON-8/Main St W – 550m**
- Turn **left** at **Main St W/ON-2 W/Ontario King's Hwy – 400m**
- Take the **3rd right** onto **Haddon Ave S – 450m**
- Take the **3rd left** onto **Sterling St – 550m**
- Follow **Sterling St** to **McMaster Sterling Entrance** and proceed through
- See *Next Page* for **'Detailed On Campus Directions'** including *Parking and Lot Information*

Google Map Link – Directions To DBAC Facility Main Entrance:

http://maps.google.ca/maps?f=d&source=s_d&saddr=King's+Hwy+403&daddr=Sterling+St+to:43.264628,-79.915538+to:Stearns+Dr&geo=F8XmIAldDu08-w%3BFUchIAld_Jg8-w%3B%3BFXsqIAlda518-w&hl=en&mra=dpe&mrcr=0&mrsp=2&sz=16&via=1,2&sll=43.26405,-79.912834&sspn=0.007375,0.013754&ie=UTF8&ll=43.265581,-79.912319&spn=0.01475,0.027509&t=h&z=15

Route from Hwy 403 to DBAC Main Entrance:



“ACHIEVING EXCELLENCE IN SPORT MEDICINE AND ORTHOPEDICS”



DAVID BRALEY SPORT MEDICINE AND REHABILITATION CENTRE



Detailed On-Campus Directions:

- Proceed through **McMaster Sterling Entrance**
- Just past kiosk make a **quick right** and **right again** onto **Stearn Dr** - stay in right hand lane
- Note **Parking Lot Signage** indicating lots '**C**' and '**Stadium**'
- Note which lots are **Open / Full** for **Transponders / Visitors** (individuals without transponder)
 - Individuals **without a Transponder** must park in lots **Open to Visitors** only
 - Individuals **with a Transponder** must park in lots **Open to Transponders** only
- Drive past first stop sign / pedestrian crossing staying in right hand lane
- **Parking Lot C** will be on **right side** as you approach next stop sign
- If Lot C Open **turn right** at stop sign and drive to entrance gate on **right side** (*see Google link below*)
- If Lot C full **turn left** and proceed to **Stadium Lot** (Underground Parking) (*see Google link below*)
- *24m after left turn **DBAC Facility Main Entrance** will be **on right** at next stop sign / pedestrian crossing
- For **Stadium Lot** continue to next stop sign and **turn right** onto **Michelle Crescent**
- Proceed with **Ron Joyce Football Stadium** now **on right**
- Drive on Michelle Crescent around perimeter of stadium going around far end zone
- Entrance to **Stadium Lot** (Underground Parking) will be **on right**

Google Map Link – Directions To Parking Lot C:

http://maps.google.ca/maps?f=d&source=s_d&saddr=King's+Hwy+403&daddr=St+to:Stearn+Dr+to:43.264659,-79.914851&geocode=FX8mIAIdDu08-w%3BFUchlAId_Jg8-w%3BFXQqIAId7JU8-w%3B&hl=en&mra=dme&mrcr=0&mrsp=3&sz=17&via=1,2&sll=43.26573,-79.915752&sspn=0.003688,0.006877&ie=UTF8&t=h&z=17

Google Map Link – Directions To Stadium Lot (Underground Parking):

http://maps.google.ca/maps?f=d&source=s_d&saddr=King's+Hwy+403&daddr=St+to:Stearn+Dr+to:43.267183,-79.916793&geocode=FX8mIAIdDu08-w%3BFUchlAId_Jg8-w%3BFXQqIAId7JU8-w%3B&hl=en&mra=dme&mrcr=0&mrsp=3&sz=17&via=1,2&sll=43.266058,-79.915946&ss

“ACHIEVING EXCELLENCE IN SPORT MEDICINE AND ORTHOPEDICS”



DAVID BRALEY SPORT MEDICINE AND REHABILITATION CENTRE



McMaster University Parking & Transit Services:

We recommend viewing the links below to the McMaster University Parking & Transit website for additional information, clarification, and to print a campus map prior to your visit.

- Main Page – <http://parking.mcmaster.ca/>
- Rates – <http://parking.mcmaster.ca/rates08-09.htm>
- Maps – <http://parking.mcmaster.ca/map2.htm>
- FAQ's – <http://parking.mcmaster.ca/parking-FAQ.html>

“ACHIEVING EXCELLENCE IN SPORT MEDICINE AND ORTHOPEDICS”